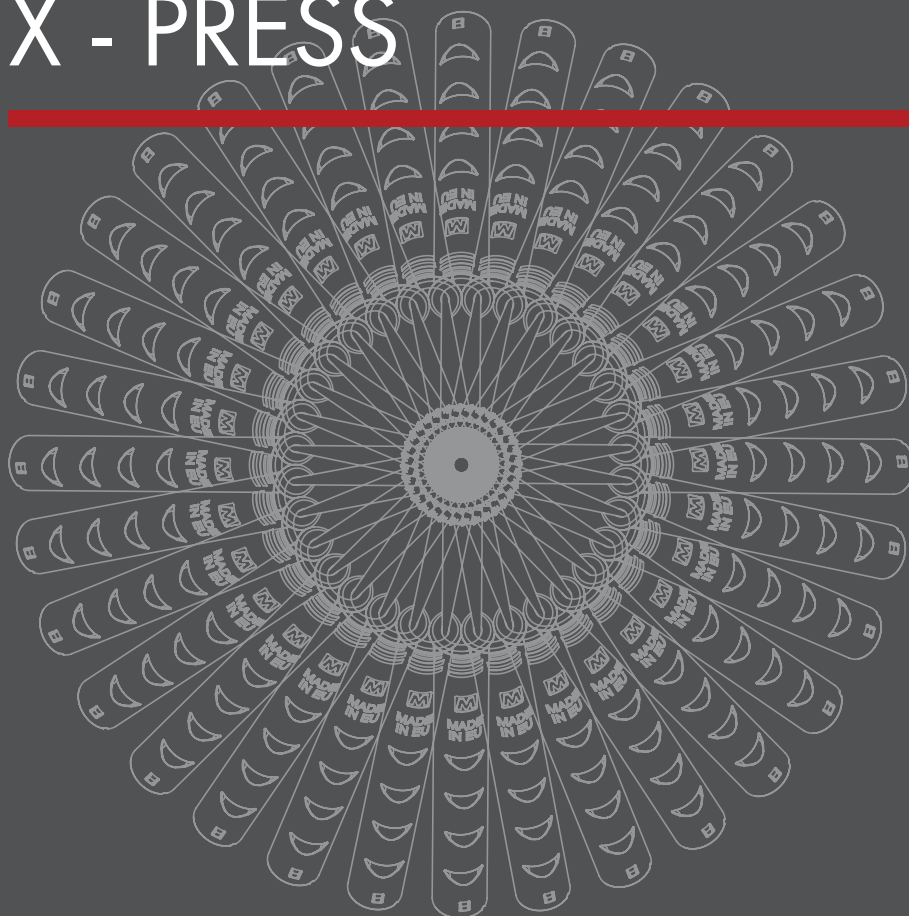


1. X - PRESS

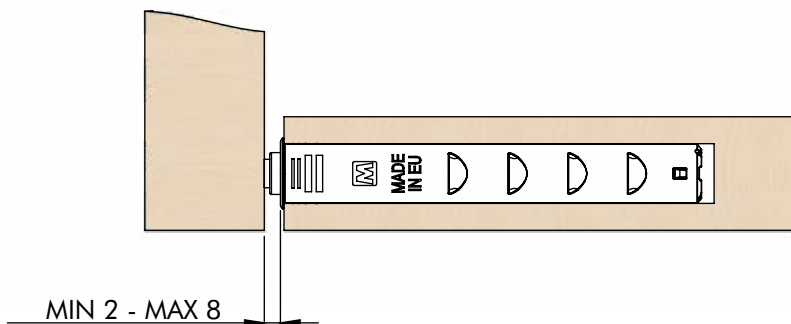
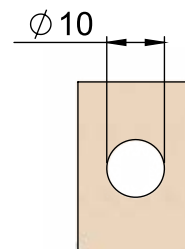
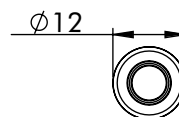
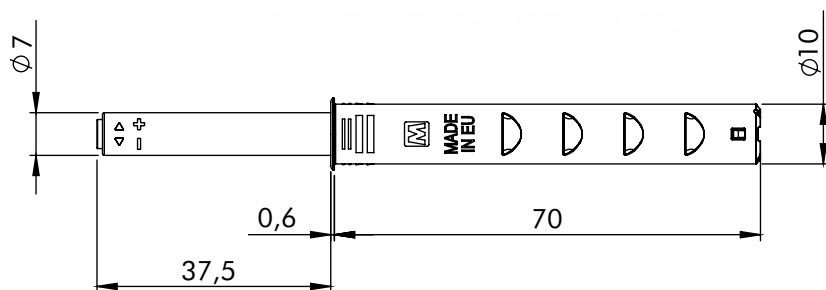


X - PRESS - RUBBER



RUBBER

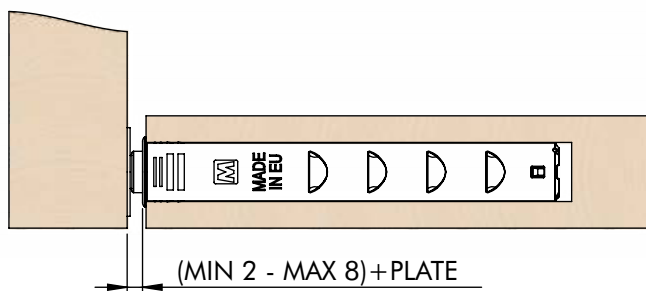
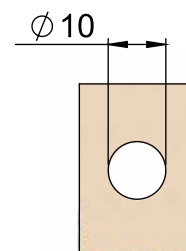
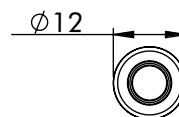
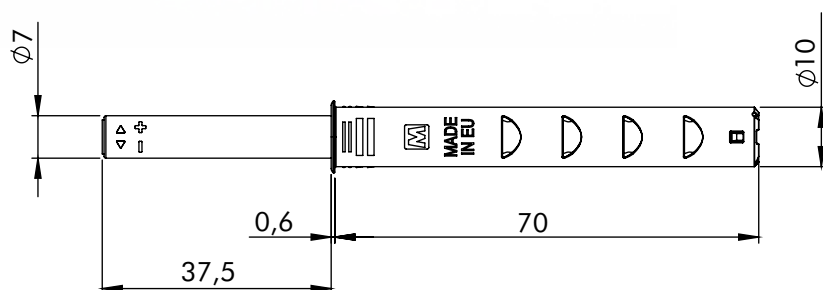
CODE	SPRING	PACK	COLOR
944.R010.01	SOFT	200	WHITE
944.R010.06	SOFT	200	GRAY
944.R010.76	SOFT	200	ANTRACIT
944.R020.01	MEDIUM	200	WHITE
944.R020.06	MEDIUM	200	GRAY
944.R020.76	MEDIUM	200	ANTRACIT



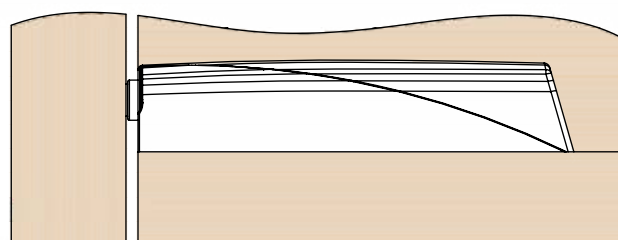
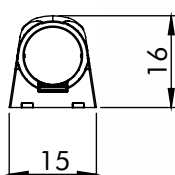
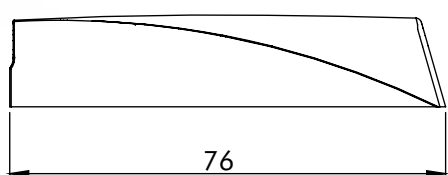
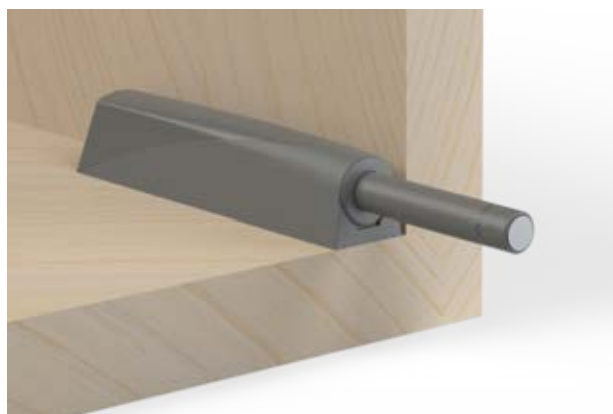


NEODIUM MAGNET N50

CODE	SPRING	PACK	COLOR
944.M010.01	SOFT	200	WHITE
944.M010.06	SOFT	200	GRAY
944.M010.76	SOFT	200	ANTRACIT
944.M020.01	MEDIUM	200	WHITE
944.M020.06	MEDIUM	200	GRAY
944.M020.76	MEDIUM	200	ANTRACIT

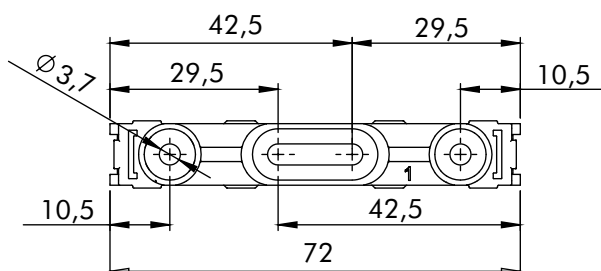


X-PRESS UNIVERSAL HOLDER

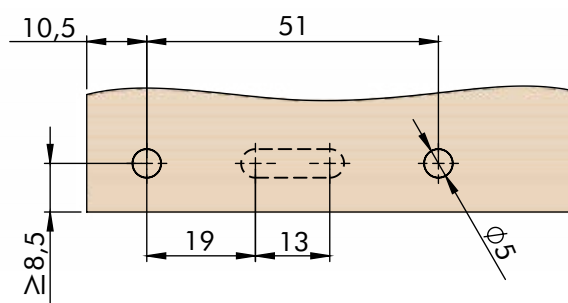
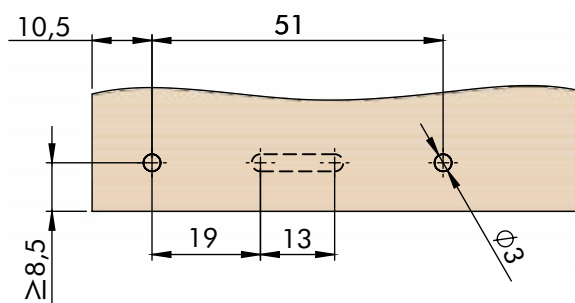
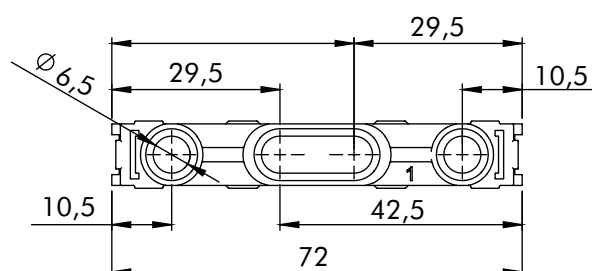


MIN 2 - MAX 8

FOR CHIPBOARD SCREW



FOR EURO SCREW



CODE	PACK	COLOR
962.CS00.01	200	WHITE
962.CS00.06	200	GRAY
962.CS00.76	200	ANTRACIT

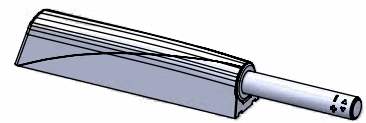
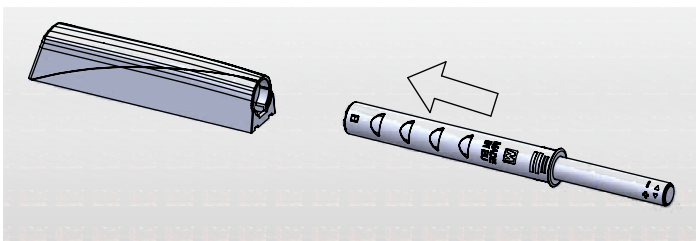
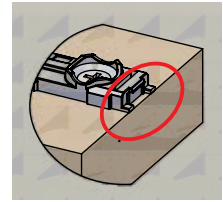
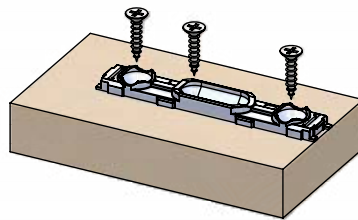
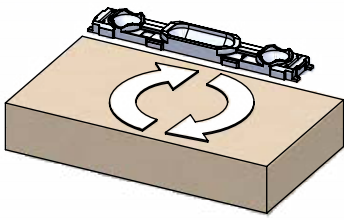
CODE INCLUDES BASE PLATE + COVER

CODE	PACK	COLOR
962.EU00.01	200	WHITE
962.EU00.06	200	GRAY
962.EU00.76	200	ANTRACIT

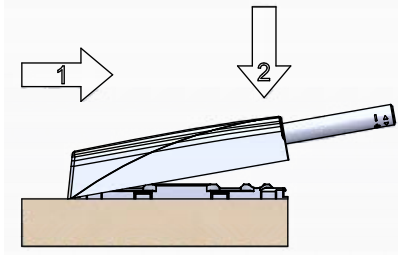
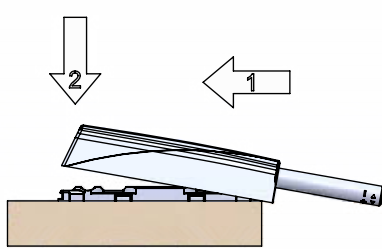
CODE INCLUDES BASE PLATE + COVER

HOW TO FIX AND REMOVE THE HOLDER

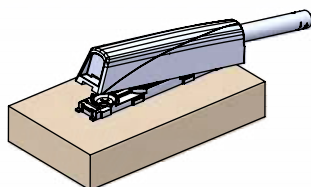
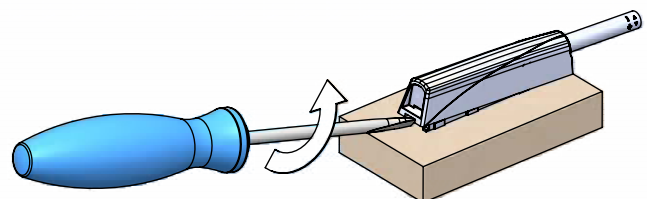
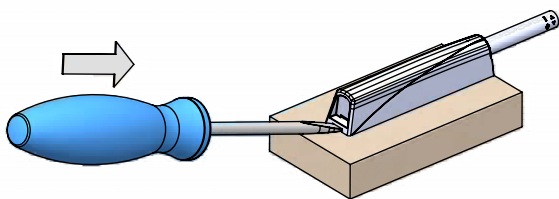
BASE PLATE - UNIVERSAL FIXING



ATTACHMENT FROM BOTH SIDE

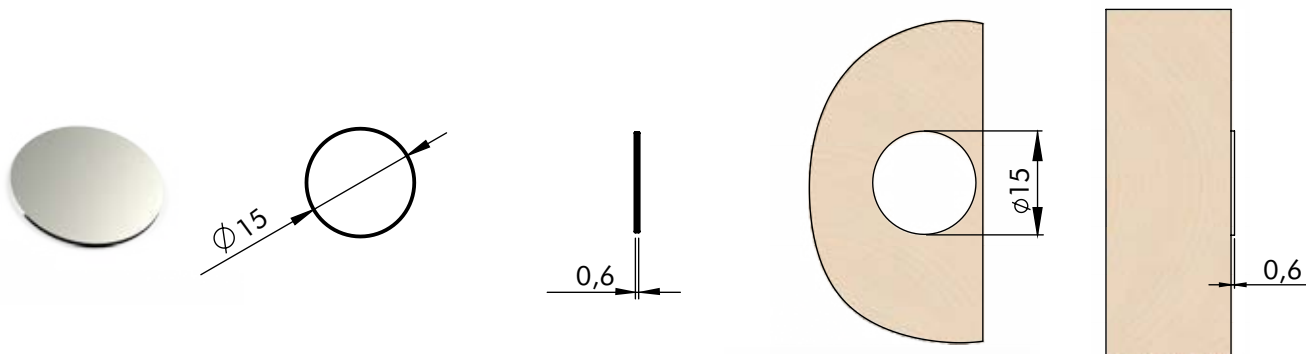


EASY TO REMOVE



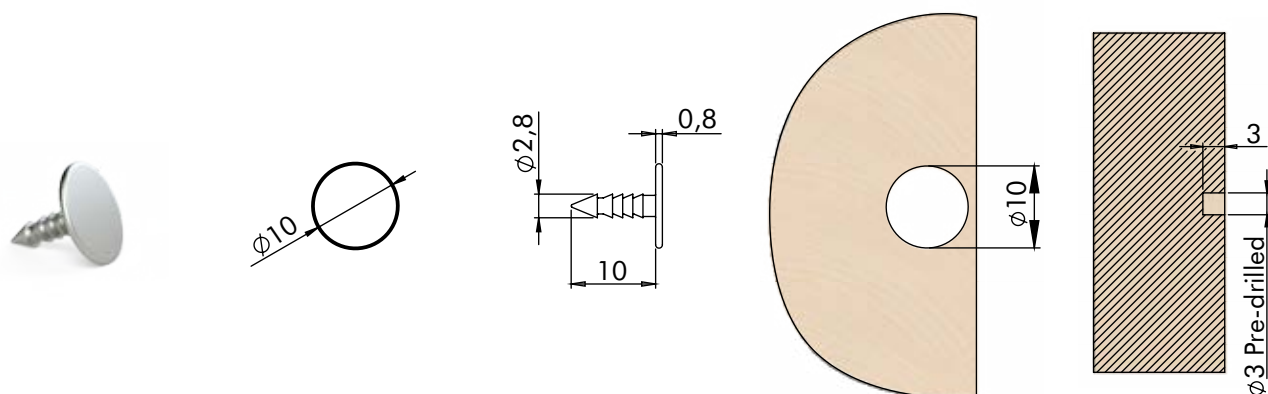
ACCESORIES

ADHESIVE PLATE



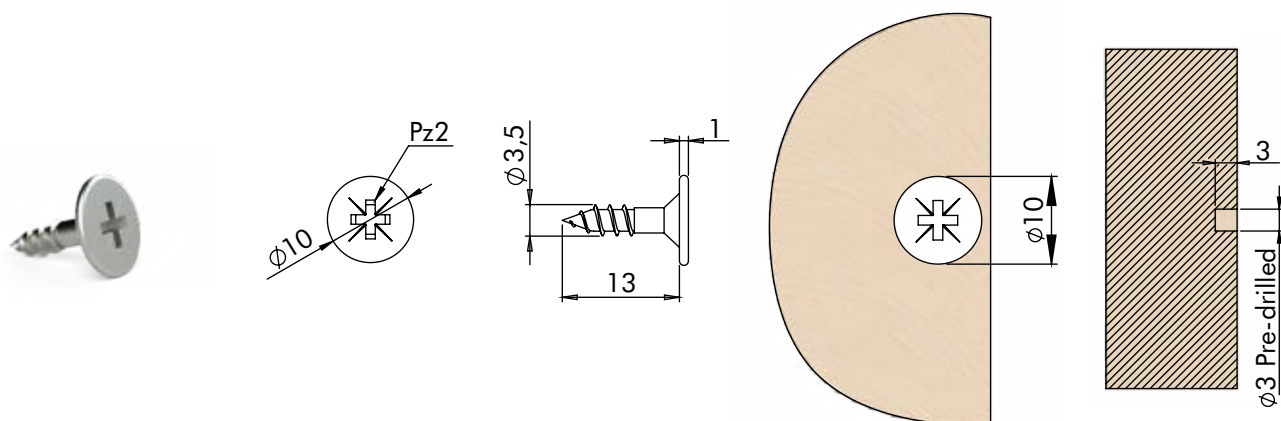
CODE	PACK	FINISH
971.AP00.ST	200	SATIN

PRESS INSERT PLATE



CODE	PACK	FINISH
971.PR00.50	200	NICKEL PL

PLATE WITH SCREW



CODE	PACK	FINISH
971.SF00.50	200	NICKEL PL