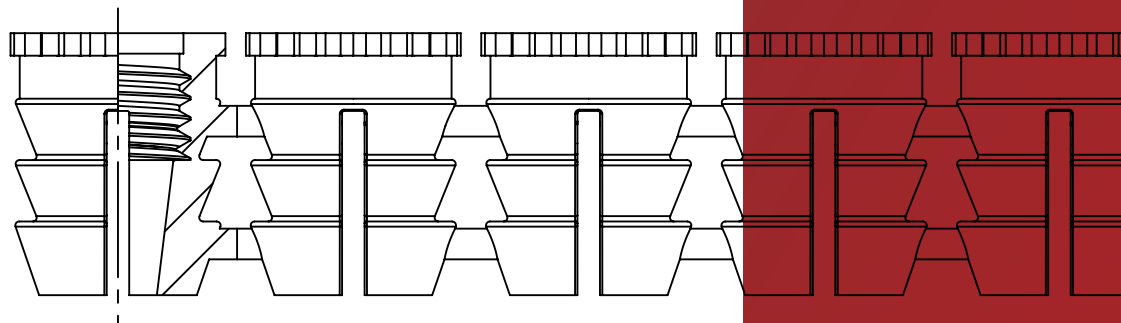
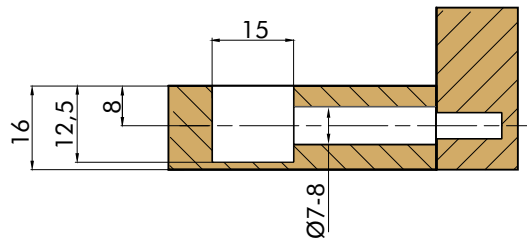
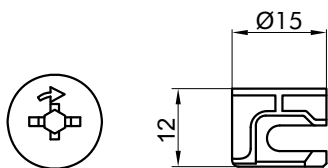


# 7. SCREWS AND CONNECTING FITTINGS



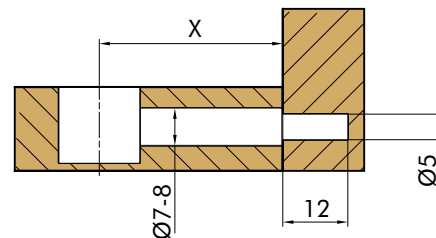
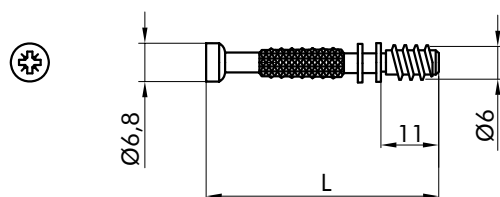
## CONNECTING FITTINGS - Ø 15 MM

### EXCENTER CAM



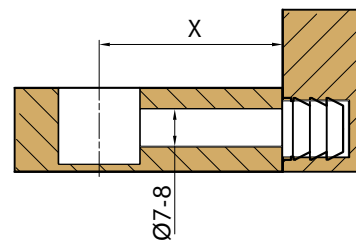
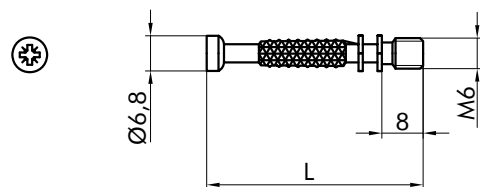
CODE	PACK	FINISH
EX02.016.00	2000	ZINC PL

### DOWELS - WOOD THREAD



CODE	X	L	PACK	FINISH
TR20.L24.40	24	35	2000	ZINC PL
TR43.L28.40	28	39	2000	ZINC PL
TR18.L34.40	34	45	2000	ZINC PL

### DOWELS - METRIC THREAD

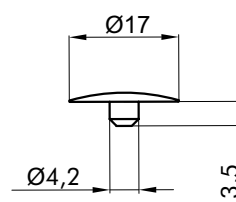


CODE	X	L	PACK	FINISH
TR21.624.40	24	32	2000	ZINC PL
TR22.628.40	28	36	2000	ZINC PL
TR19.634.40	34	42	2000	ZINC PL

### COVER CAP FOR EXCENTER Ø15 MM

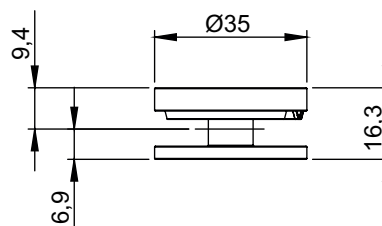
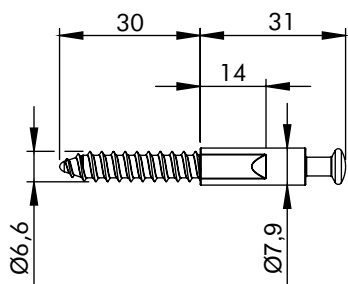
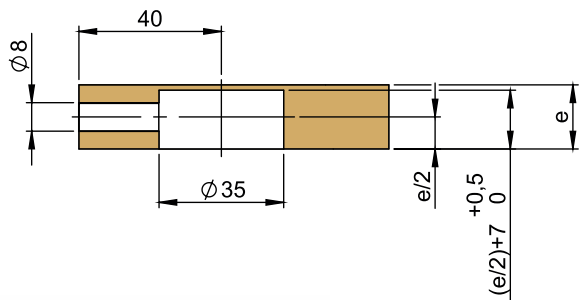


CODE	PACK	COLOR
379.1700.01	1000	WHITE
379.1700.02	1000	BROWN
379.1700.03	1000	BLACK
379.1700.04	1000	BEGIE
379.1700.98	1000	ANTRACIT
379.1700.AV	1000	AVORIO
379.1700.SO	1000	SONOMA
379.1700.ST	1000	DARK SO.



## OTHER CONNECTING FITTINGS

### SAFE CONNECTOR Ø 35 MM



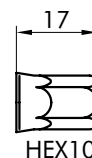
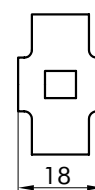
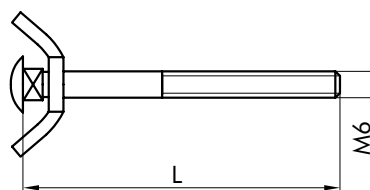
CODE	PACK	FINISH
452A.661.40	1000	ZINC PL

CODE	PACK	FINISH
2400.135.40	250	ZINC PL

### WORKTOP CONNECTOR



CODE	L	PACK	FINISH
665.0650.40	65	300	ZINC PL
665.1000.40	100	250	ZINC PL
665.1200.40	120	250	ZINC PL
665.1500.40	150	200	ZINC PL

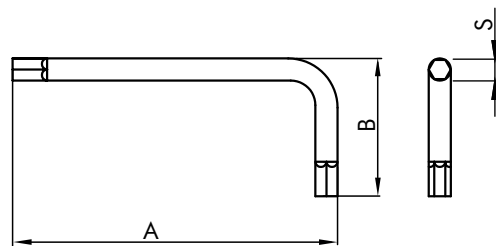


## OTHER CONNECTING FITTINGS

### ALLEN KEY L SHAPE ROUND BODY



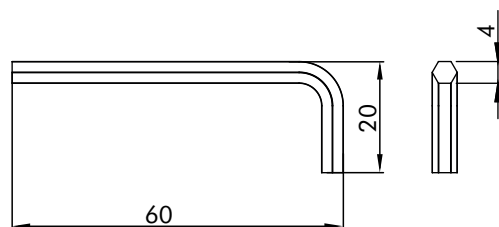
CODE	S	A	B	PACK	FINISH
566.0200.40	2	54	18	3000	ZINC PL
566.0250.40	2,5	54	18	3000	ZINC PL
566.0300.40	3	60	22	2500	ZINC PL
566.0400.40	4	66	28	1500	ZINC PL
566.0500.40	5	76	31	1000	ZINC PL
566.0600.40	6	86	36	500	ZINC PL



### ALLEN KEY - HEX BODY



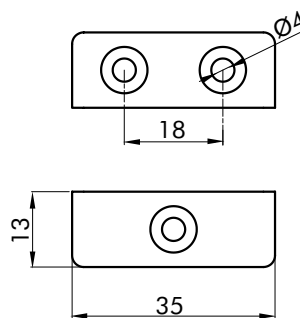
CODE	PACK	FINISH
566.E400.40	2000	ZINC PL



### CORNER CONNECTOR



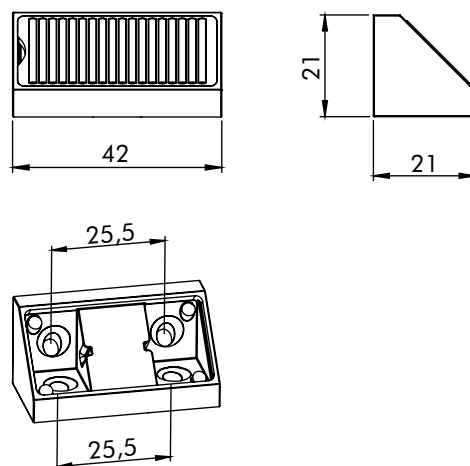
CODE	PACK	COLOR
4200.000.01	2500	WHITE



### CORNER CONNECTOR WITH COVER CAP



CODE	PACK	COLOR
3316.000.02	2000	BROWN

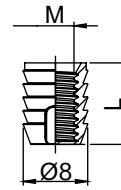


## BUSHES AND NUTS

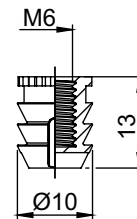
### PLASTIC SOCKETS



CODE	M	L	PACK	COLOR
278.08M4.05	M4	8	25000	NATURAL
278.11M4.05	M4	11	25000	NATURAL
278.11M6.05	M6	11	25000	NATURAL



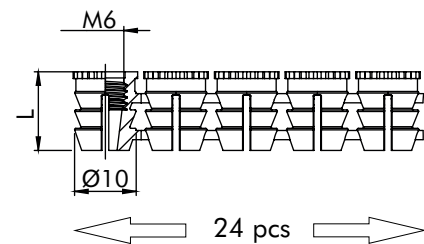
CODE	PACK	COLOR
277.13M6.05	15000	NATURAL



### PLASTIC SOCKETS IN STRIP



CODE	L	PACK	COLOR
279.10M6.05	10	10000	NATURAL
279.13M6.05	13	10000	NATURAL

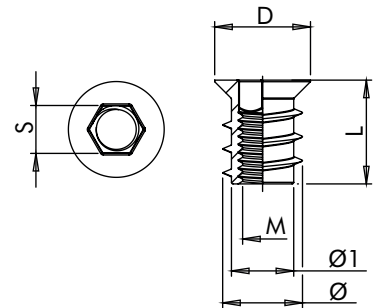


## BUSHES AND NUTS

### STEEL HEXAGON BUSHES



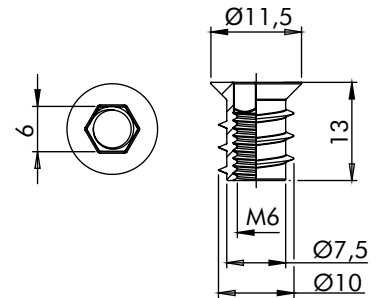
CODE	M	L	Ø1	Ø	D	S	PACK	FINISH
312.0613.40	M6	13	7,8	10	12	6	4000	ZINC PL
312.0615.40	M6	15	7,8	10	12	6	3000	ZINC PL
312.0617.40	M6	17	7,8	10	12	6	2500	ZINC PL
312.0620.40	M6	20	7,8	10	12	6	2000	ZINC PL
312.0624.40	M6	24	7,8	10	12	6	2000	ZINC PL
312.0815.40	M8	15	9,7	12,5	14	8	2000	ZINC PL
312.0820.40	M8	20	9,7	12,5	14	8	1500	ZINC PL
312.0824.40	M8	24	9,7	12,5	14	8	1300	ZINC PL
312.1020.40	M10	20	12,3	15,3	20	10	1000	ZINC PL



### ZAMAC HEXAGON BUSHES



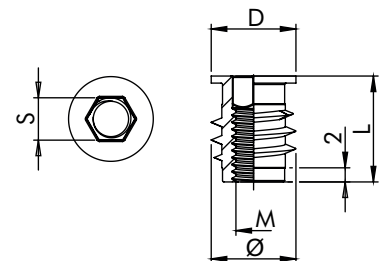
CODE	PACK	FINISH
312.Z613.00	5000	ZINC PL



### STEEL HEXAGON BUSHES



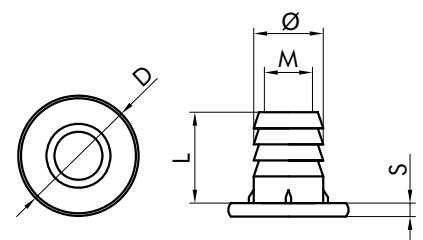
CODE	M	L	Ø	D	S	PACK	FINISH
314.0410.40	M4	10	8	8	4	1000	ZINC PL
314.0615.40	M6	15	12	12	6	1000	ZINC PL
314.0618.40	M6	18	12	12	6	1000	ZINC PL
314.0815.40	M8	15	14	14	8	1000	ZINC PL



### PRESS INSERT NUTS



CODE	M	L	Ø	D	S	PACK	FINISH
645.0600.40	M6	14	9	14	1,5	2500	ZINC PL
645.0800.40	M8	16	11	19	2,5	1000	ZINC PL
645.1000.40	M10	17	13	22	2,5	1000	ZINC PL

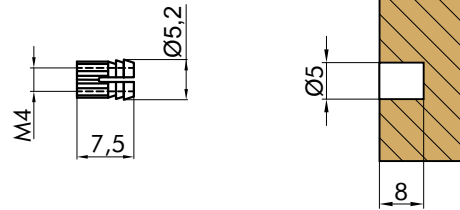


## BUSHES AND NUTS

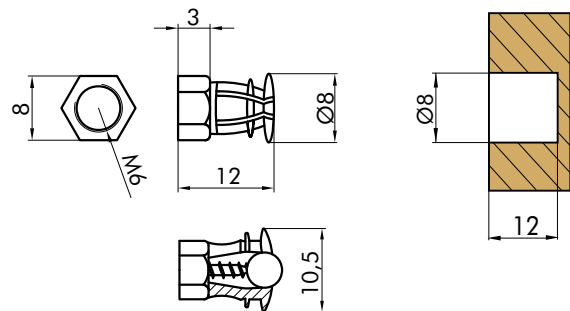
### BRASS EXPANSION BUSHES



CODE	PACK	FINISH
TC33.408.70	2500	BRASS



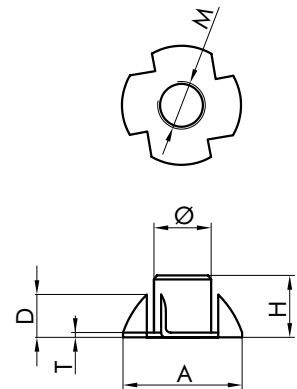
CODE	PACK	FINISH
TC82.612.70	2500	BRASS



### T - NUTS



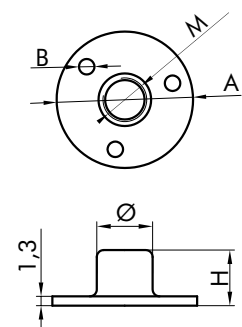
CODE	M	H	A	Ø	D	T	PACK	FINISH
106.0609.40	M6	9	19	7,3	6,5	1,2	2000	ZINC PL
106.0612.40	M6	12	19	7,3	6,5	1,2	2000	ZINC PL
106.0810.40	M8	10	22	9,6	7	1,5	2000	ZINC PL
106.0811.40	M8	11	22	9,6	7	1,5	2000	ZINC PL
106.0815.40	M8	15	22	9,6	8	1,5	2000	ZINC PL
106.1012.40	M10	12	25	11,5	8	1,5	2000	ZINC PL



### SCREW - IN NUTS



CODE	M	A	H	Ø	B	PACK	FINISH
5044.080.40	M8	25	12	10	3,5	1250	ZINC PL
5044.100.40	M10	29	11	11,6	3,8	1250	ZINC PL

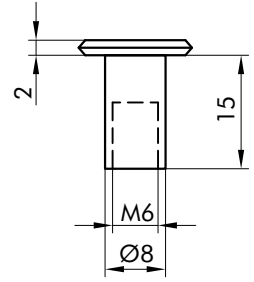
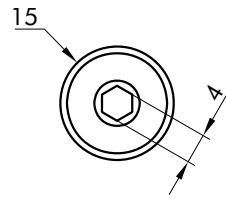


## BUSHES AND NUTS

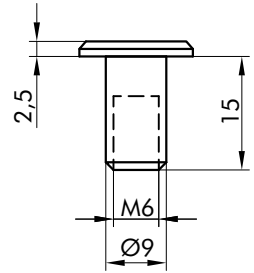
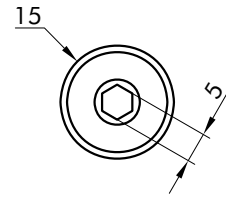
### FLAT HEAD NUTS



CODE	PACK	FINISH
608.0615.30	2000	YELLOW ZN



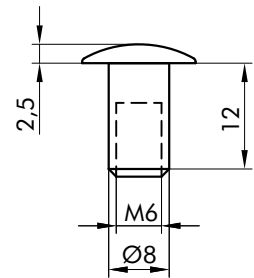
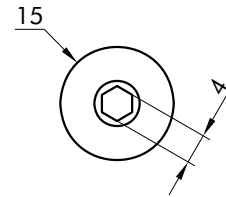
CODE	PACK	FINISH
563.0615.30	2000	YELLOW ZN



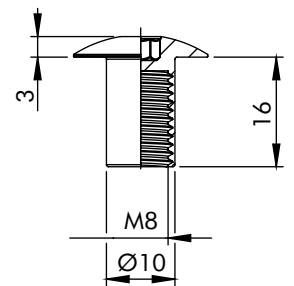
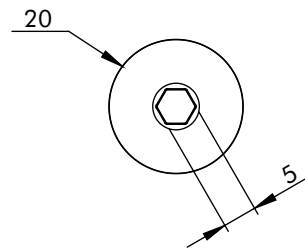
### ROUNDED HEAD NUTS



CODE	PACK	FINISH
628.0612.40	2000	ZINC PL



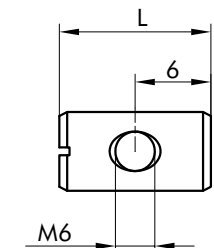
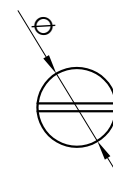
CODE	PACK	FINISH
595.0816.40	1000	ZINC PL



### BARREL NUTS

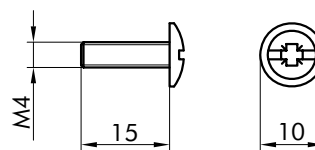
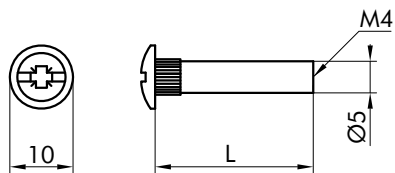


CODE	Ø	L	PACK	FINISH
699.1012.40	10	12	1000	ZINC PL
699.1014.40	10	14	1000	ZINC PL
699.1214.40	12	14	1000	ZINC PL



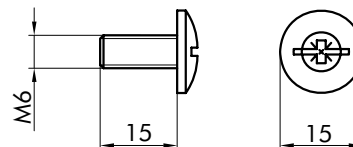
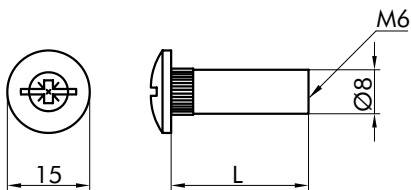


## CONNECTING NUTS AND SCREWS



CODE	L	PACK	FINISH
565.1000.40	10	1000	ZINC PL
565.1500.50	15	1000	NICKEL PL
565.2700.50	27	1000	NICKEL PL
565.3000.50	30	1000	NICKEL PL
565.3500.50	35	1000	NICKEL PL

CODE	PACK	FINISH
565.1400.40	1000	NICKEL PL

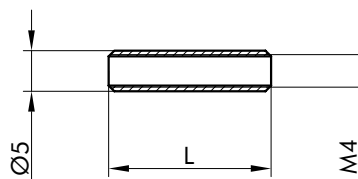


CODE	L	PACK	FINISH
555.0631.50	31	1000	NICKEL PL
555.0638.50	38	1000	NICKEL PL

CODE	PACK	FINISH
555.0615.50	1000	NICKEL PL



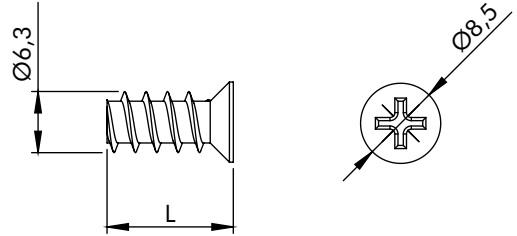
CODE	L	PACK	FINISH
1402.300.30	30	1000	YELLOW ZN
1402.450.30	45	1000	YELLOW ZN



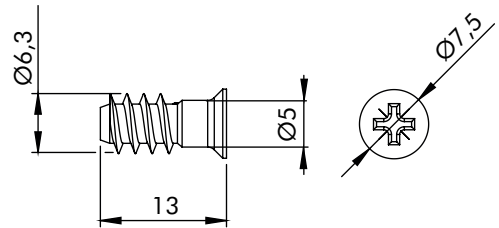
# EURO SCREWS



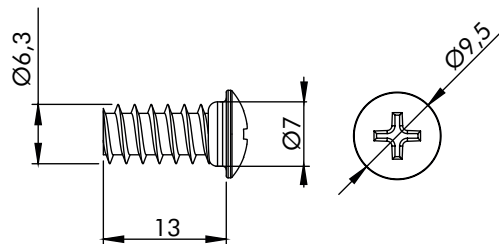
CODE	L	PACK	FINISH
326.6309.40	9	8000	ZINC PL
326.6311.40	11	6000	ZINC PL
326.6313.40	13	10000	ZINC PL
326.6319.40	19	4000	ZINC PL
326.6324.40	24	3000	ZINC PL



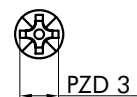
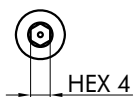
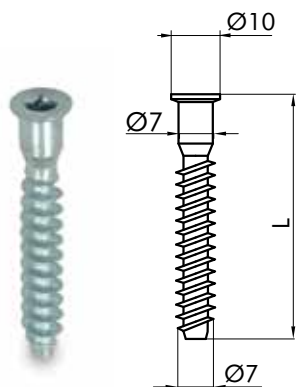
CODE	PACK	FINISH
322.6313.50	12000	NICKEL PL



CODE	PACK	FINISH
325.6313.40	8500	ZINC PL

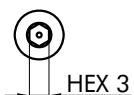
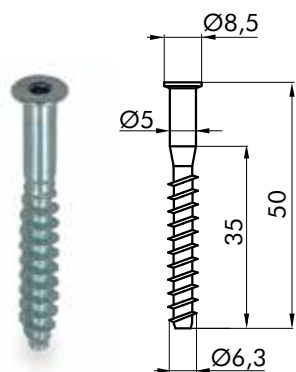


## CONFIRMAT SCREWS



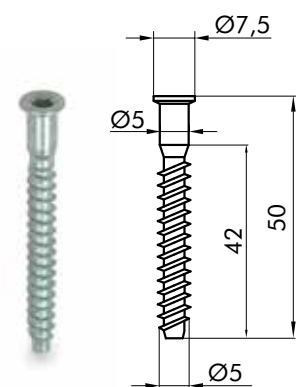
CODE	L	PACK	FINISH
127.1300.40	30	3000	ZINC PL
127.1400.40	40	2500	ZINC PL
127.1500.40	50	2000	ZINC PL
127.1700.40	70	1000	ZINC PL

CODE	PACK	FINISH
127.2500.40	2000	ZINC PL



CODE	PACK	FINISH
470.1500.40	2500	ZINC PL

CODE	PACK	FINISH
470.2500.40	2500	ZINC PL



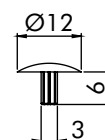
CODE	PACK	FINISH
553.1500.40	2000	ZINC PL

CODE	PACK	FINISH
553.2500.40	2000	ZINC PL

## COVER CAP FOR CONFIRMAT SCREWS



CODE	PACK	COLOR
128.1200.01	2000	WHITE

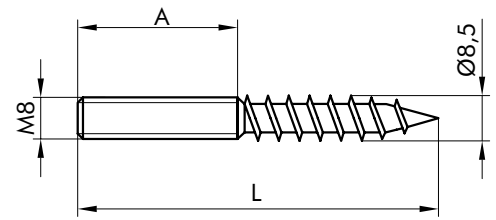


## OTHER SCREWS

### HANGER BOLTS



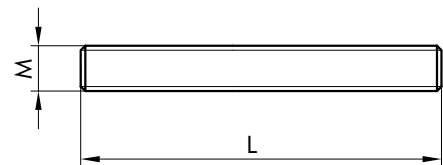
CODE	L	A	PACK	FINISH
400.8050.40	50	24	1000	ZINC PL
400.8060.40	60	29	1000	ZINC PL
400.8070.40	70	34	1000	ZINC PL
400.8080.40	80	39	500	ZINC PL



### THREADED BARS



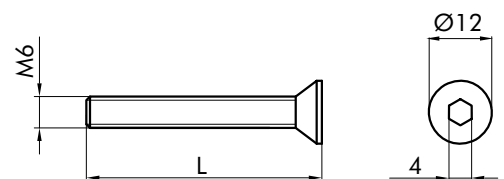
CODE	M	L	PACK	FINISH
401.6050.40	M6	50	2000	ZINC PL
401.6060.40	M6	60	1500	ZINC PL
401.8100.40	M8	100	500	ZINC PL



### FLAT HEAD SCREWS



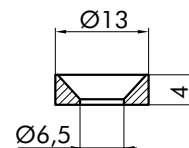
CODE	L	PACK	FINISH
426.6050.40	50	500	ZINC PL
426.6060.40	60	500	ZINC PL
426.6070.40	70	500	ZINC PL
426.6080.40	80	500	ZINC PL



### WASHER FOR FLAT HEAD SCREWS



CODE	PACK	FINISH
380.2089.40	1000	ZINC PL



## OTHER SCREWS

### KNOB SCREWS



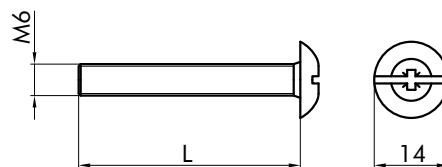
CODE	L	PACK	FINISH
404.4010.40	10	500	ZINC PL
404.4012.40	12	500	ZINC PL
404.4015.40	15	500	ZINC PL
404.4016.40	16	500	ZINC PL
404.4017.40	17,5	500	ZINC PL
404.4020.40	20	500	ZINC PL
404.4022.40	22	500	ZINC PL
404.4023.40	23	500	ZINC PL
404.4024.40	24	500	ZINC PL
404.4025.40	25	500	ZINC PL
404.4028.40	28	500	ZINC PL
404.4030.40	30	500	ZINC PL
404.4032.40	32	500	ZINC PL
404.4035.40	35	500	ZINC PL
404.4038.40	38	500	ZINC PL
404.4040.40	40	500	ZINC PL
404.4042.40	42	500	ZINC PL
404.4045.40	45	500	ZINC PL
404.4047.40	47,5	500	ZINC PL
404.4050.40	50	500	ZINC PL
404.4055.40	55	500	ZINC PL
404.4060.40	60	500	ZINC PL



### ROUNDED HEAD COMBI SCREWS



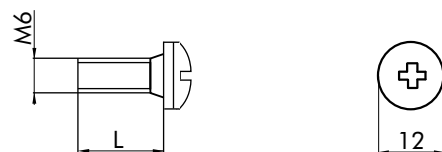
CODE	L	PACK	FINISH
413.6015.40	15	500	ZINC PL
413.6020.40	20	500	ZINC PL
413.6025.40	25	500	ZINC PL
413.6030.40	30	500	ZINC PL
413.6035.40	35	500	ZINC PL
413.6040.40	40	500	ZINC PL
413.6050.40	50	500	ZINC PL



### SCREW FOR BED FITTINGS



CODE	L	PACK	FINISH
172.1000.40	10	2000	ZINC PL
172.1400.40	14	2000	ZINC PL

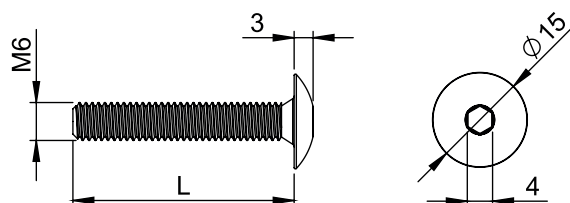


## OTHER SCREWS

### ROUNDED HEAD SCREWS WITH HEXAGON



CODE	L	PACK	FINISH
514.6020.40	20	500	ZINC PL
514.6025.40	25	500	ZINC PL
514.6030.40	30	500	ZINC PL
514.6035.40	35	500	ZINC PL
514.6040.40	40	500	ZINC PL
514.6045.40	45	500	ZINC PL
514.6050.40	50	500	ZINC PL
514.6055.40	55	500	ZINC PL
514.6060.40	60	500	ZINC PL
514.6065.40	65	500	ZINC PL
514.6070.40	70	500	ZINC PL
514.6080.40	80	500	ZINC PL



### FLAT HEAD SCREWS WITH HEXAGON



CODE	L	PACK	FINISH
562.6015.40	15	500	ZINC PL
562.6020.40	20	500	ZINC PL
562.6025.40	25	500	ZINC PL
562.6030.40	30	500	ZINC PL
562.6035.40	35	500	ZINC PL
562.6040.40	40	500	ZINC PL
562.6045.40	45	500	ZINC PL
562.6050.40	50	500	ZINC PL
562.6055.40	55	500	ZINC PL
562.6060.40	60	500	ZINC PL
562.6065.40	65	500	ZINC PL
562.6070.40	70	500	ZINC PL
562.6080.40	80	500	ZINC PL
562.6100.40	100	500	ZINC PL

